

ROTATING PULVERIZERS

11 models for excavators with operating weight from 5 to 90 tons

FK SERIES

— ROTATION 360°

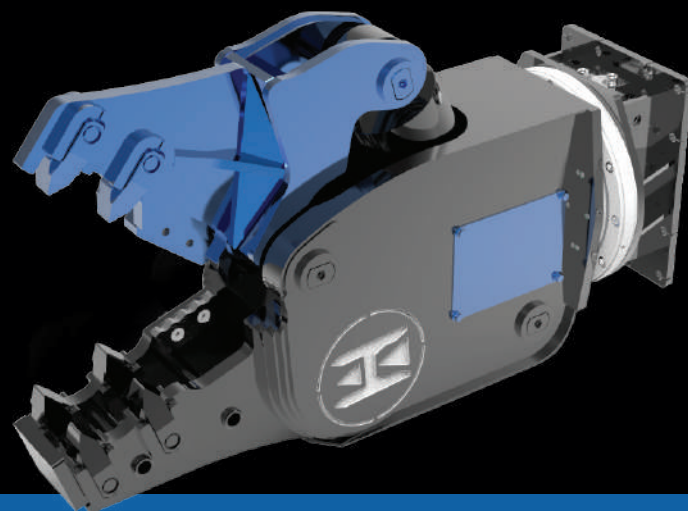
— INTEGRATED "RELIEF" VALVE
TO AVOID PRESSURE PEAKS ON THE ROTATING MOTOR

— GEAR MOTOR FOR EXTRA POWER AND PRECISION
(FROM MODEL FK22 UP)

— DOUBLE BALLS SLEWING RING
(FROM MODEL FK16 UP)

— EXCELLENT SPEED/POWER TO WEIGHT RATIO

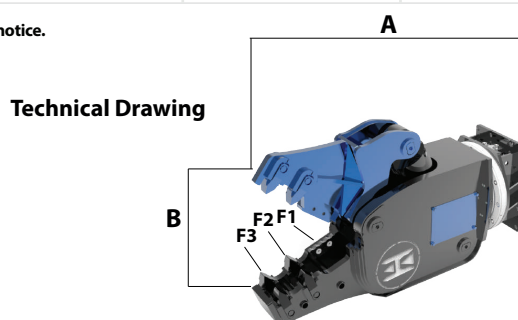
— CYLINDER FULLY PROTECTED
FROM POSSIBLE DEBRIS DURING DEMOLITION



THE RIGHT SHAPE FOR THE PRIMARY DEMOLITION

| MODELS | | FK05 | FK08 | FK10 | FK13 | FK16 | FK22 |
|--------|----|-------|--------|--------|---------|---------|---------|
| t | | 5-10 | 6-13 | 9-15 | 12-20 | 14-23 | 16-27 |
| kg | | 450 | 750 | 950 | 1350 | 1700 | 2100 |
| l/min | | 50-70 | 60-100 | 70-110 | 110-160 | 140-200 | 180-230 |
| bar | | 250 | 260 | 260 | 300 | 300 | 300 |
| ° | | 360° | 360° | 360° | 360° | 360° | 360° |
| l/min | | 5-8 | 5-8 | 5-8 | 20-25 | 20-30 | 20-30 |
| bar | | 70 | 70 | 70 | 70 | 70 | 70 |
| A | mm | 1350 | 1520 | 1640 | 1850 | 2000 | 2400 |
| B | mm | 460 | 600 | 670 | 720 | 760 | 900 |
| mm | | 160 | 160 | 160 | 200 | 200 | 200 |
| F1 | t | 100 | 115 | 140 | 180 | 195 | 234 |
| F2 | t | 50 | 55 | 65 | 110 | 120 | 135 |
| F3 | t | 30 | 35 | 40 | 57 | 65 | 80 |
| Ø Max | mm | 20 | 25 | 25 | 35 | 40 | 45 |

*All illustrations and numerical data in this catalog are purely indicative and subject to change at our discretion and without notice. We therefore reserve the right to modify them with a view to improving and continuously developing our product.



WWW.HAMMEREUROPE.COM



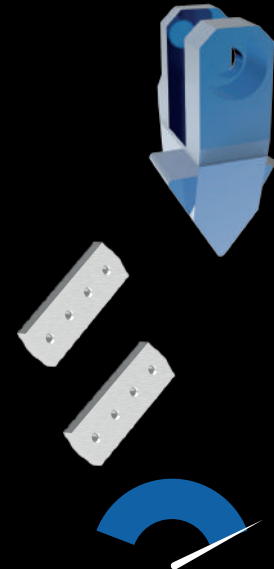
**FIND OUT
MORE**

**ALL THE PARTS THAT MOSTLY UNDERGO
WEARING ARE EASILY REPLACEABLE**



**SPEED VALVE
(OPTIONAL
FROM MODEL FK16 UP)**

PRESSURE UP TO 300 BAR



VALVOLA DI VELOCITÀ
(Opzionale)



MINING & QUARRYING



DEMOLITION & RENOVATION



CONSTRUCTION



METALLURGICAL INDUSTRY

MODELS

| | | FK27 | FK33 | FK43 | FK55 | FK81 |
|--------------|----|-------------|-------------|-------------|-------------|-------------|
| t | | 20-32 | 26-40 | 32-55 | 40-65 | 55-90 |
| kg | | 2500 | 3500 | 4200 | 5900 | 7800 |
| l/min | | 200-300 | 300-350 | 350-400 | 400-500 | 450-550 |
| bar | | 300 | 300 | 300 | 300 | 300 |
| ° | | 360° | 360° | 360° | 360° | 360° |
| l/min | | 20-30 | 40-50 | 40-50 | 40-50 | 60-80 |
| bar | | 70 | 70 | 70 | 70 | 70 |
| A | mm | 2600 | 2800 | 3080 | 3420 | 3600 |
| B | mm | 980 | 1015 | 1230 | 1350 | 1550 |
| | mm | 200 | 200 | 200 | 300 | 300 |
| F1 | t | 250 | 370 | 505 | 545 | 620 |
| F2 | t | 140 | 225 | 285 | 330 | 435 |
| F3 | t | 85 | 125 | 146 | 175 | 210 |
| Ø Max | mm | 50 | 50 | 60 | 65 | 70 |

*All illustrations and numerical data in this catalog are purely indicative and subject to change at our discretion and without notice. We therefore reserve the right to modify them with a view to improving and continuously developing our product.





Valvola di Velocizzazione
Speed Valve
Eilgangventil
Speed Valve
Valvula de Velocidad
Скоростной клапан



Moltiplicatore di pressione BOOSTER
Pression multiplier BOOSTER
Druckmultiplikator BOOSTER
Multiplicateur de pression BOOSTER
Multiplicador de presion BOOSTER
Множитель Давления BOOSTER



Peso attrezzatura
Equipment weight
Eigengewicht
Poids de l'outil
Peso del implemento
Вес оборудования



Rotazione continua 360°
360° rotation
360° Kontinuierliche Rotation
Rotation continue 360°
Rotación continua a 360°
Непрерывное вращение на 360°



Peso escavatore
Excavator weight
Baggergewicht
Poids du porteur
Peso Escavadora
Вес экскаватора



Portata olio della rotazione
Rotation oil flow capacity
Oelfluss der Rotation
Débit hydraulique rotation
Caudal de aceite necesario para la rotación



Peso escavatore - posto benna
Excavator weight - stick mounting
Baggergewicht - Loeffelstiehlmontage
Poids du porteur - au but du
Peso escavadora al segundo brazo
Вес экскаватора (Рукоять)



Pressione di esercizio rotazione
Rotation Pressure
Oeldruck der Rotation
Pression hydraulique rotation
Presión necesaria para la rotación
Давление ротации



Peso escavatore - posto braccio
Excavator weight - boom mounting
Baggergewicht - Baggerarmmontage
Poids machibe - montage a la place du
balancier
Peso escavadora al balancin



Pressione di esercizio escavatore
Excavator working pressure
Oeldruck der Bagger
Pression hydraulique excavateur
Presión de la Escavadora
Давление откр./закр. челюстей

F3

Forza in punta
Tip force
Schliesskraft auf die Spitze
Force à la pointe
Fuerza en punta
Мощность на кончике



Portata olio escavatore
Excavator oil flow capacity
Oelfluss der Bagger
Débit hydraulique excavateur
Caudal aceite de la Escavadora
Поток откр./закр. челюстей



Lunghezza lama
Steel blade length
Messerlaenge
Longuer couteau
Anchura cuchilla
Длина ножей

All illustrations and numerical data in this catalog are purely indicative and subject to change at our discretion and without notice. We therefore reserve the right to modify them with a view to improving and continuously developing our product.